

# ***Shark***®

## **HEATER / FAN**

### **TH200UK**

## **OWNER'S GUIDE**

---



**Unit may vary in features, size, and colour**

# IMPORTANT SAFETY INSTRUCTIONS

SUITABLE FOR HOUSEHOLD USE ONLY.

## WARNING

**TO REDUCE THE RISK OF FIRE, ELECTRIC SHOCK, INJURY AND HYPERTHERMIA: READ ALL THESE INSTRUCTIONS BEFORE USE.**

1. Read all instructions before use.
2. This appliance has a polarised plug. To reduce the risk of electric shock, this plug is intended to fit in a polarised socket only one way. Do not attempt to defeat this safety feature. Unplug or disconnect the appliance from the power supply before servicing.
3. **DO NOT** operate any appliance with a damaged cord or plug. Discard appliance or return to an authorised service facility for examination and/or repair.
4. **DO NOT** run cord under carpeting. **DO NOT** cover cord with throw rugs, runners, or similar coverings. **DO NOT** route cord under furniture or appliances. Keep cord away from high traffic areas and place cord where it will not be tripped over.
5. If the power cord is damaged, it must be replaced by the manufacturer, its service agent, or similarly qualified persons in order to avoid a hazard.
6. This appliance is not intended for use by anyone (including children) with reduced physical, sensory or mental capabilities, or lack of experience and knowledge, unless they have been given supervision or instruction concerning use of the appliance by a person responsible for their safety.
7. Children should be supervised to ensure that they **DO NOT** play with the appliance.
8. Cleaning and user maintenance shall not be made by children without supervision.
9. Prior to cleaning or other maintenance, the appliance must be unplugged from the electrical socket.
10. **DO NOT** handle plug or appliance with wet hands.
11. **DO NOT** use without filter in place.
12. Only use Shark branded filters and accessories.
13. **DO NOT** damage the power cord:
  - a) **DO NOT** pull or carry appliance by the cord or use the cord as a handle.
  - b) **DO NOT** unplug by pulling on cord. Grasp the plug, not the cord.
  - c) **DO NOT** stand the appliance on the power cord, close a door on the cord, pull the cord around sharp corners, or leave the cord near heated surfaces.
14. **DO NOT** use with any opening blocked; keep free of dust, lint, hair, and anything that may reduce airflow.
15. **DO NOT** use if airflow is restricted. If the air paths become blocked, turn the appliance off and unplug from electrical socket. Remove all obstructions before you plug in and turn on the unit again.
16. **DO NOT** use if appliance is not working as it should, or has been dropped, damaged, left outdoors, or dropped into water.
17. **DO NOT** place appliance on unstable surfaces such as chairs or other furniture.
18. **DO NOT** use in the following areas:
  - a) Wet or damp surfaces
  - b) Outdoor areas
  - c) Spaces that are enclosed and may contain explosive or toxic fumes or vapour (lighter fluid, petrol, kerosene, paint, paint thinners, mothproofing substances, or flammable dust)
19. Turn off all controls before unplugging the appliance.
20. Unplug from electrical socket when not in use and before any maintenance or cleaning.
21. Hand wash with soapy water only. Washing with cleaning chemicals could damage the unit.
22. Make sure filter is in place after routine maintenance.
23. Not suitable for use with solid-state speed controls

## BATTERY REMOVAL AND DISPOSAL

This remote control uses a AAA battery. When the remote battery no longer has a charge, it should be removed from the remote and recycled. **DO NOT** incinerate or compost the product with its integral battery or the remote battery. When your remote battery needs to be replaced, dispose of it or recycle it in accordance with local ordinances or regulations. In some areas, it is illegal to place spent batteries in the trash or in a municipal solid waste stream.


Return spent battery to an authorised recycling centre or to retailer for recycling. Contact your local recycling centre for information on where to drop off the spent battery.


## POWER SUPPLY SAFETY


1. Read and follow all instructions that are on the product or provided with the product.
2. Do not use an extension cord.
3. Do not use within 3m of pool or other body of water, and do not use in a bathroom.

## IMPORTANT INSTRUCTIONS


24. This heater is hot when in use. To avoid burns, do not let bare skin touch hot surfaces. If provided, use handles when moving this heater. Keep combustible materials, such as furniture, pillows, bedding, papers, clothes, and curtains at least 3 feet (1m) from the front of the heater and keep them away from the sides and rear.
25. Clearance distance is to be determined in accordance with 67.13 or 67.14.
26. Extreme caution is necessary when any heater is used by or near children or disabled person and whenever the heater is left operating and unattended.
27. Always unplug heater when not in use
28. This heater is not intended for use in bathrooms, laundry areas and similar indoor locations. Never locate heater where it may fall into a bathtub or other water container.
29. **DO NOT** insert or allow foreign objects to enter any ventilation or exhaust opening as this may cause an electric shock or fire or damage the heater.
30. To prevent a possible fire, **DO NOT** block air intakes or exhaust in any manner. Do not use on soft surfaces, like a bed, where openings may become blocked.
31. A heater has hot and arcing or sparking parts inside. **DO NOT** use it in areas where petrol, paint, or flammable liquids are used or stored.
32. Use this heater only as described in this manual. Any other use not recommended by the manufacturer may cause fire, electric shock, or injury to persons.
33. Always plug heaters directly into a wall socket/receptacle. Never use with an extension cord or relocatable power tap (socket/power strip).
34. Hyperthermia can result in death. Symptoms of hyperthermia include high body temperature, headache, nausea, vomiting, tiredness, dizziness, fainting, and rapid pulse. If you begin to experience symptoms related to hyperthermia, turn off the heater and seek medical attention.
35. To avoid excessive room temperatures which can cause hyperthermia: **DO NOT** leave product running unattended in a confined space around infants, or individuals with reduced physical, sensory, or mental capabilities.

 **CAUTION** - High temperature. Keep electrical cords, drapery, and other furnishings at least 3 feet (0.9m) from the front of the heater and away from the side and rear.

 **WARNING** - Risk of hyperthermia.

 **CAUTION: Risk of fire** - Do not operate without base attached.

 **WARNING: DO NOT COVER**

 **WARNING: HOT SURFACE**

**WARNING:** In order to avoid overheating, do not cover the heater.

**DO NOT** use this heater in the immediate surroundings of a bath, a shower or a swimming pool.

**DO NOT** use this heater if it has been dropped;

**DO NOT** use if there are visible signs of damage to the heater;

**USE** this heater on a horizontal and stable surface, or fix it to the wall, as applicable.

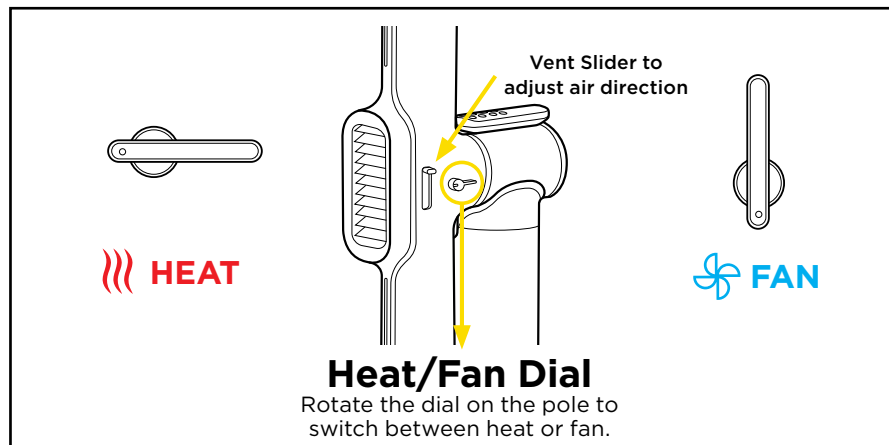
**WARNING:** Do not use this heater in small rooms when they are occupied by persons not capable of leaving the room on their own, unless constant supervision is provided.

**WARNING:** To reduce the risk of fire, keep textiles, curtains, or any other flammable material a minimum distance of 1 m from the air outlet.

# READ AND SAVE THESE INSTRUCTIONS

Please be sure to read and save the warnings above prior to using your unit.

# QUICK START GUIDE



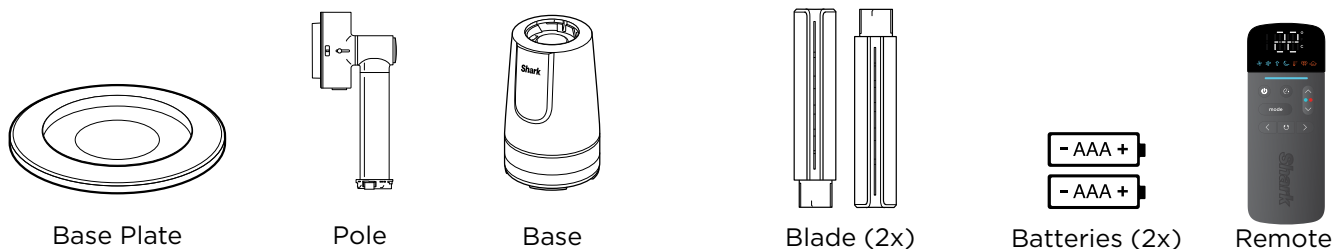
visit [qr.sharkclean.uk/TH200series](http://qr.sharkclean.uk/TH200series) or

**SCAN HERE**

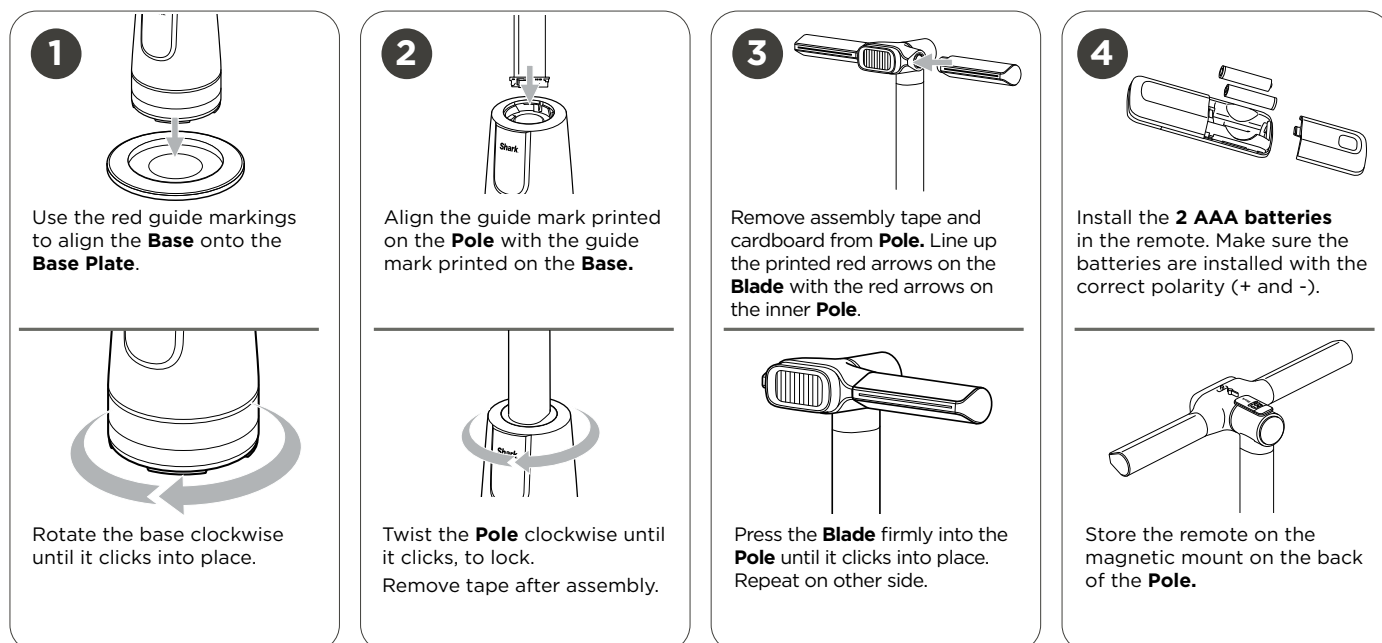


**USING YOUR SMARTPHONE CAMERA  
FOR FULL INSTRUCTIONS OR  
TO PURCHASE REPLACEMENT PARTS.**

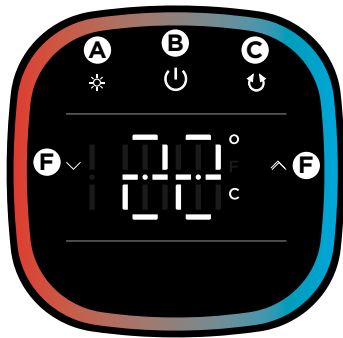
## INCLUDES



## ASSEMBLY



## ON-UNIT DISPLAY

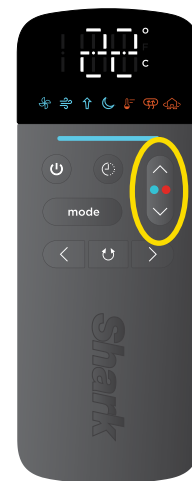


- (A) BRIGHTNESS**  
Press to adjust the brightness of the display panel. Choose between 4 levels of brightness.
- (B) POWER**  
Press to power unit on or off. It may take a moment for the unit to cool down after the heat has been turned off.
- (C) OSCILLATION**  
Press the oscillation button to cycle through oscillation range options. Setting 1 is 45 degrees, setting 2 is 90 degrees, and setting 3 is 180 degrees.
- (F) FAN / THERMO IQ ARROWS**  
When in Fan mode, press arrows to adjust fan speed up or down. When in Heat mode, press the arrows to adjust the thermostat temperature.

## FAN SPEEDS

Press the fan speed arrows on the remote or hold down the power button on the base to switch between fan speeds 1-10.

Recommended Speeds	1	2	3	4	5	6	7	8	9	10
Nursery	✓	✓	✓							
Quiet Sleep	✓	✓	✓	✓						
Working From Home	✓	✓	✓	✓	✓					
Watching TV	✓	✓	✓	✓	✓	✓				
Ambient Noise Sleep		✓	✓	✓	✓	✓	✓	✓		
Cooking				✓	✓	✓	✓	✓	✓	✓
Exercise					✓	✓	✓	✓	✓	✓
Hot Day Cool Down						✓	✓	✓	✓	✓



## REMOTE

- Before first use, insert 2 AAA batteries.
- To replace the battery in the remote, use 2 AAA batteries. See "MAINTENANCE" for battery replacement instructions.

### FAN

- (F) SPEED ADJUST**  
Press up and down arrows to scroll between fan speeds 1-10.
- (G) FAN MODES**  
Press to cycle between Sleep, BreezeBoost, and Natural Breeze settings.
  - Sleep mode:** Mute chimes, dim lights, and switch to an ideal fan speed for sleep.
  - BreezeBoost:** For a powerful burst of airflow.
  - Natural Breeze:** Varying airflow patterns to simulate natural wind.

### HEAT

- (F) THERMO IQ MODE**  
Press up and down arrows to set desired temperature. The heater will automatically adjust based on your selection.
- (G) HEAT MODES *remote only***  
Press the mode button or cycle between Comfort, Focus and Thermo IQ modes.
  - COMFORT MODE:** Soothing warmth for sustained use.
  - FOCUS MODE:** Powerful, focused heating.

### SHARED FUNCTIONS

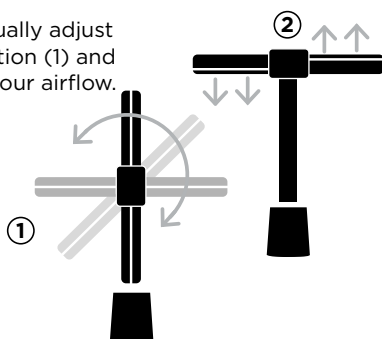
- (C) OSCILLATION**  
Press the oscillation button to cycle through oscillation range options. Setting 1 is 45 degrees, setting 2 is 90 degrees, and setting 3 is 180 degrees.
- (D) TIMER**  
Press the timer button to cycle through timer settings. Automatically turns off power after 1, 2, 4, or 8 hours.
- (C) + (D) MUTE CHIME**  
Press and hold oscillation and timer buttons for 5 seconds to mute chimes. Repeat to re-enable.
- (E) ANGLE ADJUST**  
Press the left and right arrows to slightly adjust the direction of fan.



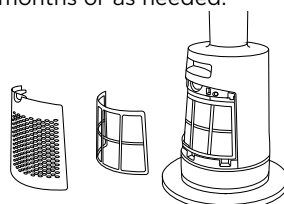
## PRODUCT TIPS

**PIVOT AND TILT:** Manually adjust the fan blade's orientation (1) and tilt (2) to personalise your airflow.

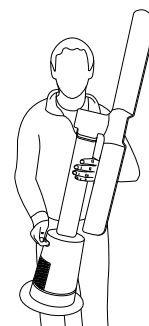
**NOTE:** The blade only rotates anti-clockwise up to 90 degrees.



**DUST DEFENCE** Panel on the rear of the unit collects the dust to make cleaning easier. Recommended to clean every 6 months or as needed.



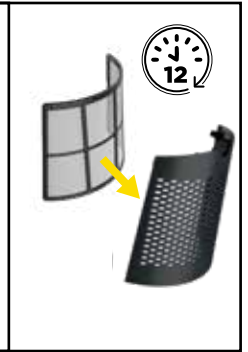
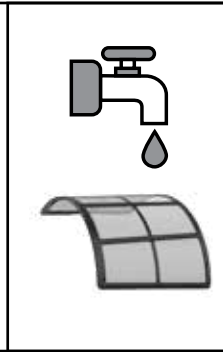
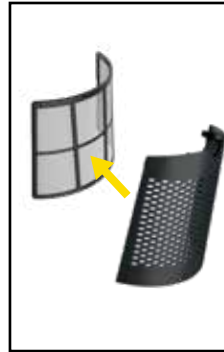
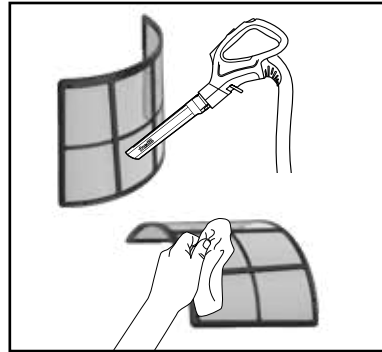
**CARRYING POSITION:** Carry the unit by the handle on the base while supporting the air duct.



## MAINTENANCE

- Unplug the fan before doing any cleaning or maintenance.
- We recommend cleaning the fan every 6 months, or as needed.
- We recommend changing the batteries in the remote control every 12 months, or as needed.

## DUST DEFENCE



**1.** Remove the Dust Defence panel from the unit by gently pulling on the finger tab.  
Note: the mesh filter does not need to be removed from the Dust Defence panel.

**2.** Use a vacuum cleaner on low speed with a soft brush attachment OR a cloth/towel to remove debris from the Dust Defence panel and the internal mesh screen.  
**Do NOT use abrasive chemical cleaners.**

**3. OPTIONAL:** If debris is stuck between the mesh filter and the Dust Defence panel, the filter can be removed by gently pulling it out of the tabs on the panel. Rinse the filter and the panel with room-temperature tap water. Allow both the filter and the panel to air-dry for 12 hours before reinstalling. **DO NOT use the fan when the mesh filter is wet.**

## DUST DEFENCE (CONTINUED)



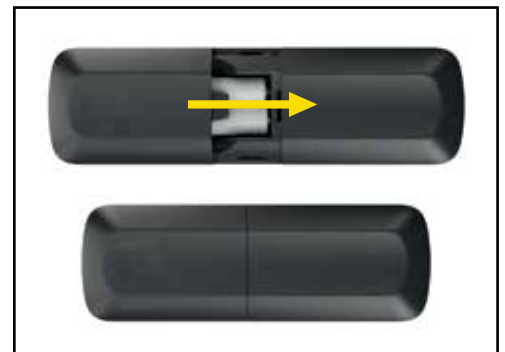
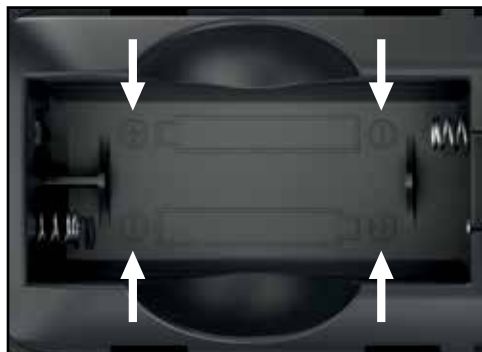
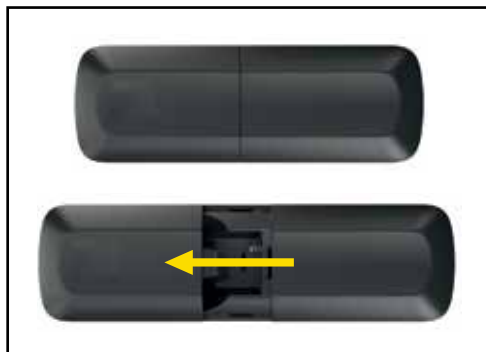
**4.** Replace the Dust Defence panel by inserting the tabs on the bottom of the panel into the indents on the unit and pushing the panel in until it clicks into place.

## EXTERNAL CLEANING



To clean the exterior of the fan, wipe it down with a microfiber cloth dampened with warm, soapy water. To prevent damage, do not use abrasive chemical cleaners or too much water.

## REPLACING THE BATTERIES IN THE REMOTE



**1.** To access the batteries, push down gently on the battery door on the back of the remote, then slide the door off. Remove the batteries from the chamber and follow local ordinances for battery disposal.

**2.** Insert 2 new AAA batteries into the remote. Make sure the batteries are installed in correct orientation as shown in the battery chamber.

**3.** Slide the battery door back into place on the back of the remote.

## TROUBLESHOOTING AND FREQUENTLY ASKED QUESTIONS

<b>PRODUCT SPECIFICATIONS</b>	<b>What is the weight of the unit?</b>	The weight of the unit is 21.85lbs (9.91kg).
	<b>What are the dimensions of the unit?</b>	The dimensions of the unit are 45.9" H x 13.8" W x 11.8" D (116.7cm H x 35cm W x 30cm D).
	<b>What is the voltage of the unit?</b>	The voltage of the unit depends on the region it was purchased in. For North America it is 120V and for United Kingdom and Europe it is 220-240V~.
	<b>What is the wattage of the unit?</b>	The wattage of the unit depends on the region it was purchased in. For North America it is 1400W and for United Kingdom and Europe it is 2200W.
	<b>What is the amperage of the unit?</b>	The amperage of the unit is 10A.
	<b>What is the frequency of the unit?</b>	The frequency of the unit depends on the region it was purchased in. For North America it is 60Hz and for United Kingdom and Europe it is 50-60Hz.
	<b>How many speeds does the unit have?</b>	The unit has 10 fan speeds.
	<b>How long is the product guarantee?</b>	This products comes with a 2-year guarantee. Please refer to the Guarantee / Warranty section in Instruction Booklet for detailed information on activation and duration, as it may vary by region.
	<b>How many oscillation angles does the unit have?</b>	Depending on the unit purchased, it will either have 1 or 3 different oscillation angles. Please refer to the On-Unit Display section in the Quick Start Guide for detailed information.
	<b>What is the maximum oscillation angle of the unit?</b>	The maximum oscillation angle is 180°.
<b>GENERAL USE</b>	<b>What is the air-flow of the unit?</b>	The maximum airflow of the unit is 1180CFM.
	<b>How and where should I set up my unit?</b>	<p>Do not place appliance on unstable surfaces such as chairs or other furniture, and do not use in the following areas: a) Wet or damp surfaces b) Outdoor areas c) Spaces that are enclosed and may contain explosive or toxic fumes or vapors (lighter fluid, gasoline, kerosene, paint, paint thinners, mothproofing substances, or flammable dust). This heater is not intended for use in bathrooms, laundry areas, or similar indoor locations. Never locate heater where it may fall into a bathtub or other water container. Please read the Safety Instructions in the Instruction Booklet for details about where the unit should and should not be set up.</p> <p>1) To set up your unit, start by assembling the Base to the Base Plate by aligning the red symbols on each and rotating the base until it clicks into place.</p> <p>2) Next, align the arrow printed on the pole with the symbol printed on the Base. Twist the Pole clockwise until you hear it click. Now you can remove the tape on the bottom of the Base.</p> <p>3) Remove the assembly tape and cardboard from the Pole. Line up the red arrow on the Blade with the one on the inner Pole. Press the Blade firmly into the Pole until it clicks into place.</p> <p>4) Install the 2 AAA batteries in the remote. Make sure that they are installed with the correct polarity ( + and -). Store the remote on the magnetic mount on the back of the Pole.</p> <p>You are now all set!</p>

## TROUBLESHOOTING AND FREQUENTLY ASKED QUESTIONS

GENERAL USE	<b>What fan and heat settings does the unit have?</b>	<p>Depending on the unit purchased, settings may differ. Please refer to the Quick Start Guide for detailed information.</p> <p><b>Fan functions</b>            SPEED ADJUST Press up and down arrows to scroll between fan speeds 1-10.            FAN MODES Press to cycle between Sleep, BreezeBoost and Natural Breeze settings.</p> <p><b>Heat functions</b>            THERMO IQ Press up and down arrows to set desired temperature. The heater will automatically adjust based on your selection.            HEAT MODES (remote only) Press the mode button to cycle between Comfort and Focus settings.</p>
	<b>How do I take apart my unit?</b>	<p>We do not recommend taking your unit apart as it is only safe to operate when fully assembled. However it is possible to disassemble if you need to ship it back to us. You will need a screwdriver.</p> <p>1) Start by removing the blades. Make sure the blade is pointing forward, then give a strong tug on the blade and it should come out. It is normal for this to require a fair amount of force.</p> <p>2) Next, remove the pole from the base; you will need your screwdriver. Rotate the unit all the way counter-clockwise. Once it is fully rotated, slot the screwdriver into the opening behind the pole to unclip it, then rotate the pole Counter-Clockwise to remove it.</p> <p>3) Finally to remove the base plate, locate the clip on the underside and insert your screwdriver to unclip it. The plate will easily rotate off.</p>
	<b>How do I switch from fan to heat?</b>	To switch from fan to heat, use the dial on the side of the unit. There is a guide on the unit to indicate which orientation is fan and which is heat. When it has been switched, the lights on the on-unit display and remote will change to red when the unit is on heat, or blue when the unit is on fan.
	<b>Why are the fan blades not moving / tilting?</b>	Make sure that the blade has been firmly placed onto the unit. While keeping the other side of the fan stable, push the blade against the pole until there is no gap between the blade and the pole. You should hear a click when the blade has been fully inserted correctly.
	<b>Why is the fan unsteady?</b>	Make sure the fan has been assembled correctly and that all parts have been completely clicked into place. Check the connection points where the base meets the base plate, and where the pole connects to the base. If the fan is still unsteady, disconnect the parts, then reassemble them, making sure they all click securely into place. Please see question "how do I take apart my unit" if you need help disconnecting any parts
	<b>Why has the air-flow gotten less powerful over time?</b>	<p>To make sure you are getting the optimal airflow from your TH200 series, make sure the fan is positioned at least 6 feet (1.83m) away. If you are too close to the fan you may not feel the airflow as strongly.</p> <p>You may need to clear out the Dust Defense filter - excessive Dust Defense debris could result in an impact to performance. For cleaning instructions, see the "How do I clean my fan?" FAQ.</p>
	<b>How do I carry the unit?</b>	Carry the unit by the handle on the base while supporting the air duct.



## TROUBLESHOOTING AND FREQUENTLY ASKED QUESTIONS

<b>UI / SETTINGS</b>	<b>Where do I put the remote?</b>	You can magnetically store the remote on the top of the pole where the sticker has an outline of the remote.
	<b>Why is my fan changing speeds on its own?</b>	The fan may be in Natural Breeze mode, which changes automatically to simulate natural wind. To deactivate a fan specialty mode, press change the fan speed or the Specialty mode button on the remote.
	<b>Why is my remote / on-unit screen not lit up?</b>	Firstly, please check that the batteries are correctly installed in the remote and that the unit is correctly plugged into an outlet.  If this occurs during use, note that the lights on your screen and remote will turn off after 20 seconds. To wake them up you can press any button on the remote or screen.
	<b>Why is my heater changing speeds on its own?</b>	The heater may be in Thermo IQ mode, which adjusts heater output based on the current room temperature. Thermo IQ will operate by producing heat until it reaches the temperature that you set on the unit. To change the set temperature, use the arrows on the remote or on-unit display.
	<b>Why are the lights dim?</b>	The fan may be in Sleep Mode, which dims the lights. To deactivate, press the Specialty mode button on the remote until Sleep Mode is turned off. The dimness can also be adjusted with the Brightness icon on the on-unit display.
	<b>Why does my fan not beep/chime when I press buttons?</b>	Your fan may be on silent mode. Hold down the timer and oscillation buttons on the remote for 3 seconds to disable the feature.
	<b>Why is the heat output low?</b>	This product has three different heat modes, optimised for different scenarios. You can change between them using the "mode" button. The lowest is Comfort mode, and this is meant to be used at close range, for longer periods of time. The middle mode is Focus, and that is meant to warm a personal space from further away. The hottest mode is ThermoIQ. Here you can set the temperature you wish you achieve and the fan will output the highest amount of heat to achieve and sustain that temperature. When the dial on the unit is set to HEAT setting, you can use the MODE button to cycle through these three heat modes.
	<b>How do I disable beeping / chiming?</b>	Hold down the timer and oscillation buttons on the remote at the same time for 3 seconds to disable chiming. Repeat to re-enable.



### The Shark Guarantee

When a consumer buys a product in the UK and ROI, they get the benefit of legal rights relating to the quality of the product (your "legal rights"). You can enforce your legal rights against your retailer, including Shark if you bought your Shark product from [sharkclean.co.uk](http://sharkclean.co.uk). However, at Shark we are so confident about the quality of our products that we give the owner an additional, free parts and labour manufacturer's guarantee of up to 2 years.

The guarantee it comes with is an important consideration - and reflects how much confidence the manufacturer has in its product and manufacturing quality.

The manufacturer's guarantee does not affect your legal rights.

### How long are new Shark products guaranteed for?

Our manufacturer's guarantee lasts for one year from the date of purchase as standard, or for 2 years if you register your purchase with us within 28 days.

### How do I register my Shark guarantee?

If you have purchased your Shark product directly from [sharkclean.co.uk](http://sharkclean.co.uk) your guarantee is registered automatically. If you bought it from anywhere else in the UK or ROI, you can register your guarantee online within 28 days of purchase.

- To register online, please visit [www.sharkclean.co.uk/register-guarantee](http://www.sharkclean.co.uk/register-guarantee) or scan the QR code in your instruction booklet.
- Keep a note of the date you purchased the Shark product.

### IMPORTANT:

• **Keep your receipt** if you bought your Shark product from anywhere except [sharkclean.co.uk](http://sharkclean.co.uk). You will need it to claim under your guarantee.

- The free Shark guarantee is only valid in the country where the product was purchased.

### What are the benefits of registering my free Shark guarantee?

When you register your guarantee, you will get an extra 1 year of cover. We'll also have your details to hand if we ever need to get in touch. If you further agree to receive communications from us, you can also receive tips and advice on how to get the best out of your Shark product and hear the latest news about new Shark technology and launches.

### What is covered by the free Shark guarantee?

Repair or replacement (at Shark's discretion) of your Shark product, including all parts and labour.

### What is not covered by the free Shark guarantee?

- Normal wear and tear.
- Accidental damage or faults caused by negligent use or care, misuse, neglect, careless operation or handling of the Shark product which is not in accordance with the Shark Operating Manual supplied with your product.
- Damage caused by use of the Shark product for anything other than normal domestic household purposes.
- Damage caused by use of parts not assembled or installed in accordance with the operating instructions.
- Damage caused by use of parts and accessories which are not Shark Genuine Components
- Faulty installation (except where installed by Shark).
- Repairs or alterations carried out by parties other than Shark or its agents.

### How can I claim under the free Shark guarantee?

Contact our customer service helpline on **0808 109 1166** in the UK or **1-800 849 055** in the ROI. For service hours please visit our website under 'Contact Us'. It's free to call, and you'll be put straight through to a Shark representative. You'll also find online support at <https://support.sharkclean.co.uk/>. The Shark representative will go through some troubleshooting with you, and if we conclude that the item has failed, we will send you a replacement part or a returns label to send the defective item back to us free of charge. When you have delivered the defective product to us, we will send you a replacement.

Please remember that **the item will need to be boxed when you return it to us**. It can be any suitable box, it does not have to be the original packaging.

### Where can I buy genuine Shark spares and accessories?

Shark spares and accessories are developed by the same engineers who developed your Shark product. You'll find a full range of Shark spares, replacement parts and accessories for all Shark products at [www.sharkclean.co.uk](http://www.sharkclean.co.uk). Please remember that damage caused by the use of non-Shark spares may not be covered under your guarantee.

## REGISTER YOUR PURCHASE

sharkclean.uk/register-guarantee  
Scan QR code using mobile device.



Benefits of registering your product and creating an account:

- Get easier, faster product support and access to warranty information
- Access troubleshooting and product care instructions
- Be among the first to know about exclusive product promotions

### TIP:

You can find the model and serial numbers on the QR code located on the back of your unit.

## RECORD THIS INFORMATION

Model Number:

Serial Number:

Date of Purchase (Keep receipt):

Store of Purchase:

## TECHNICAL SPECIFICATIONS

Voltage: 220-240V 50-60Hz / 3A

Watts: 2200W

Standby Power Consumption: 0.6W

Off Power Consumption: 0.0W

## PLEASE READ CAREFULLY AND KEEP FOR FUTURE REFERENCE.

This Instruction Guide is designed to help you get a complete understanding of your new Shark® Fan.

**SharkNinja Europe Ltd,**  
**1st/2nd Floor Building 3150,**  
**Thorpe Park, Century Way,**  
**Leeds, England, LS15 8ZB**  
**sharkclean.co.uk**

**SharkNinja Germany GmbH,**  
**Rotfeder-Ring 9,**  
**60327 Frankfurt am Main,**  
**Germany**  
**sharkclean.eu**

Illustrations may differ from actual product. We are constantly striving to improve our products; therefore the specifications contained herein are subject to change without notice.

© 2025 SharkNinja Operating LLC. SHARK is a registered trademark in the United Kingdom of SharkNinja Operating LLC.

